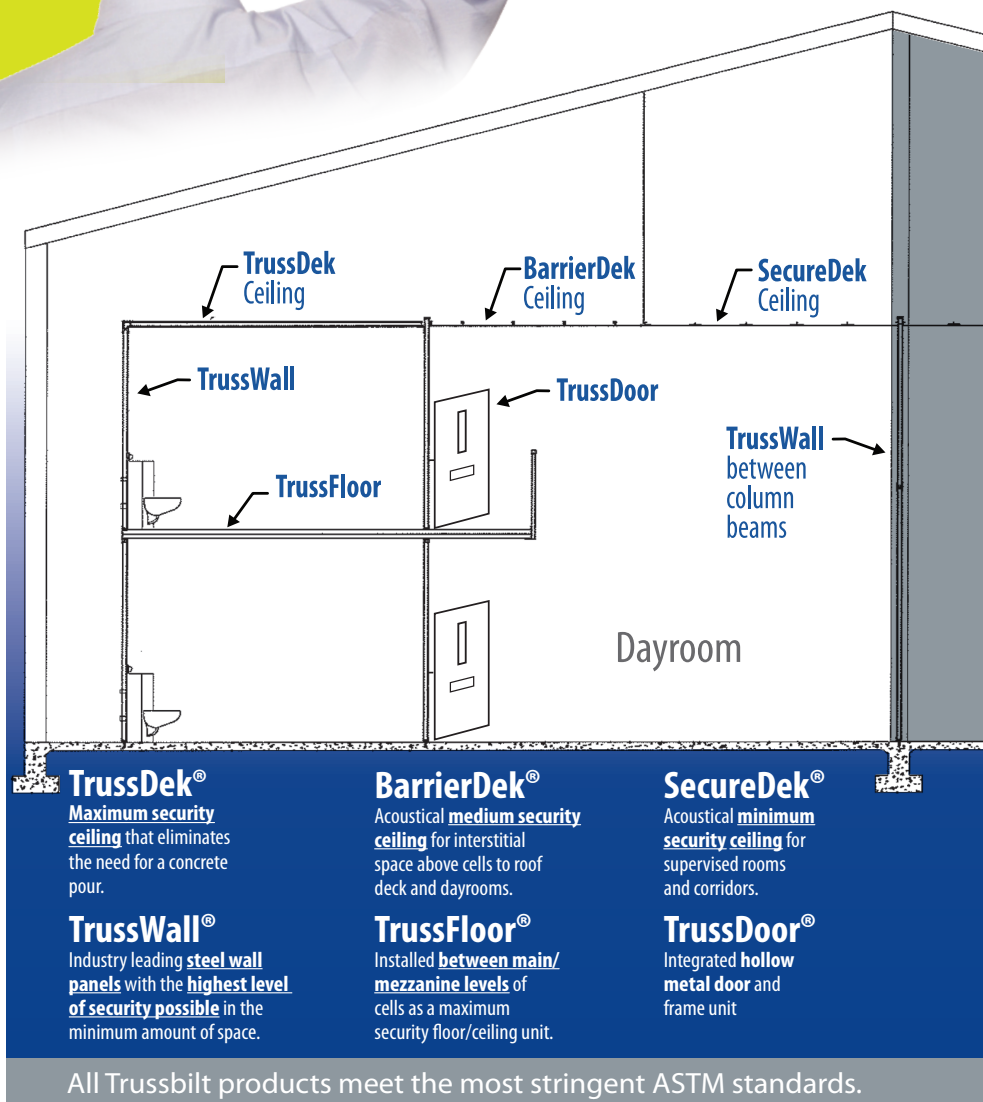


Concerned about your detention project's schedule and budget?

Manage risk with the TrussWall® Cell System

The TrussWall® Cell System provides a **complete security envelope** with Trussbilt's industry-leading integrated products, offering near-turnkey efficiency for your project's security requirements. Trussbilt and its business partners handle design, engineering, offsite production, MEP coordination, installation, finish painting, glazing, locks and hardware. TrussWall can be delivered in weeks, compared to months with other systems, and is compact and easy to store.

From design through product installation, Trussbilt solves your most serious challenges with keeping your project on-track and on-budget.



A flexible installation approach minimizes weather delays.

The TrussWall Cell System can be installed:

On a slab **before** the superstructure is erected



After the superstructure is erected but **before** the building is enclosed



After the building is enclosed and protected from the weather



- Wall installation sequence allows MEP trades to work in an open environment.
- Trussbilt-certified installers ensure system integrity and the manufacturer's warranty for the facility owner.

Faster and better work from other trades is enabled.

Trussbilt coordinates with other trades for all required cutouts, eliminating on-site confusion. Factory assembly of the chase is available for increased installation efficiency.

Installation timing flexibility and improved working conditions give the GC and other team members the best opportunity to shorten the schedule and lower risks. Cells are off the critical path! (cont'd on back)

Footprint too large?

Flexible design meets your project's unique needs.

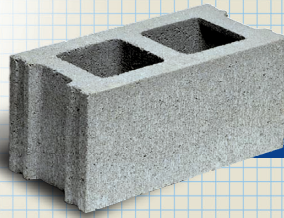
The TrussWall Cell System's space-saving design achieves ASTM's highest security level while reducing space requirements, resulting in a smaller footprint or allowing more cells in the same space.

Structural requirements for high rises, cells over a basement, and cells on second level or higher are reduced – TrussWall is 1/3 the weight of concrete.

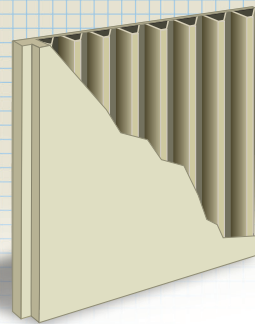
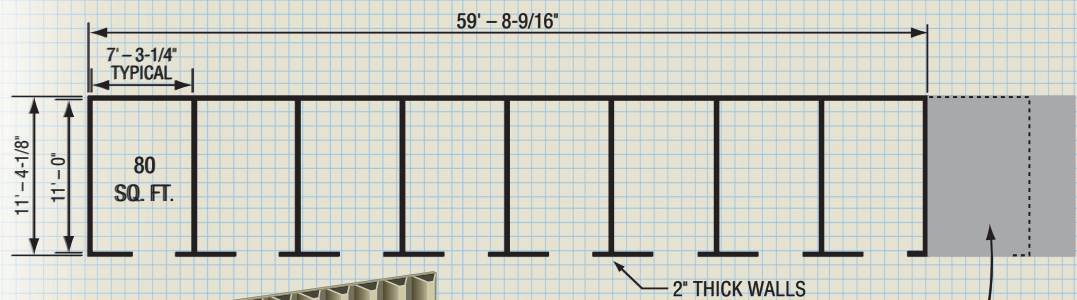
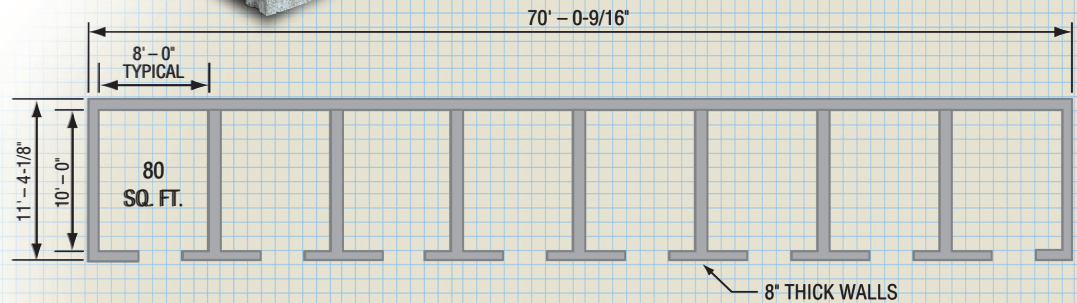
Project going over budget?



The TrussWall Cell System's production efficiencies, flexible installation approach, and space and weight-saving design features mean lower general conditions. Costs go down for all team members – the owner, GCs, and other trades.



(8) 8' x 10' cells with 8" CMU / Concrete Walls require 795 sq. ft.



(8) 8' x 10' cells with 2" TrussWall require 678 sq. ft.

This is a savings of 117 sq. ft. – more than enough for (1) additional cell!

For further information, or to request a video of the TrussWall Cell System installation process, contact Brad Schotzko at 651.789.7080.



Trussbilt

Leading Innovator of Security Products for Over 85 Years

550 Oak Grove Parkway • Vadnais Heights, MN 55127-8509

For more information visit www.trussbilt.com or call **651.633.6100**

ISO 9001:2008 Certified